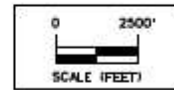


LEGEND

- PROPOSED VESTAS V110-2.0 TURBINE LOCATIONS
- PROPERTY LINES
- PARTICIPATING PROPERTY LINE 200' SETBACK
- NON-PARTICIPATING PROPERTY LINE 550' SETBACK
- BEAM PATH WITH SETBACK
- 550' SETBACK FROM PUBLIC ROAD RIGHT OF WAY
- PARTICIPATING 1250' RESIDENCE SETBACK
- NON-PARTICIPATING 1500' RESIDENCE SETBACK
- 5280' SETBACK FROM CITY CORPORATE LIMITS
- 5280' SETBACK FROM CONSERVATION AREAS & PARKS
- PARCELS WITH SIGNED AGREEMENTS



ISSUE DATE: 08-05-2019

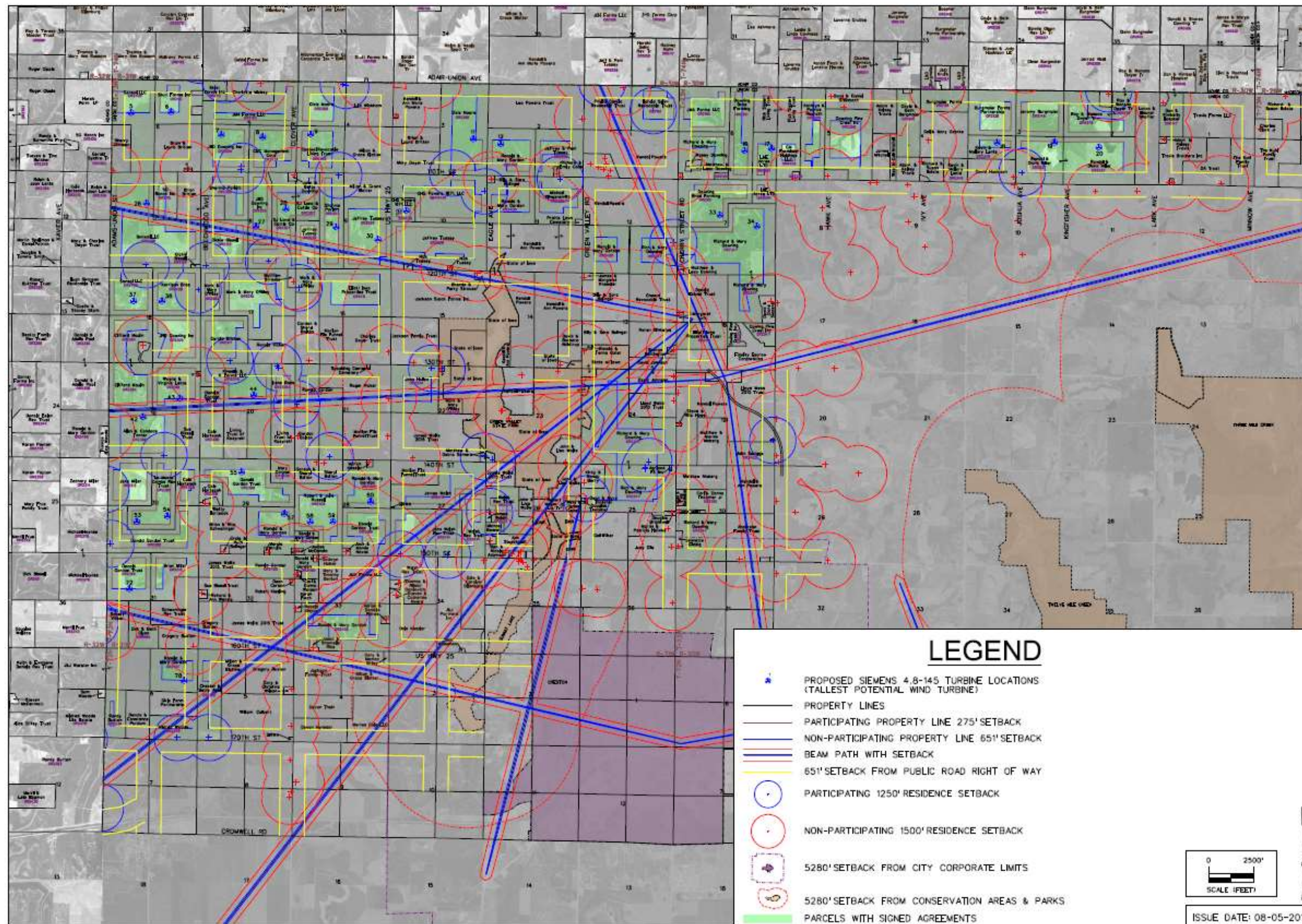
NO.	DATE	BY
1	05/31/19	MCG

Project No: 1160931
Sheet 1 of 1

MIDAMERICAN ENERGY - SOUTHERN HILLS
 UNION COUNTY, IOWA
 TURBINE SITE PLAN VESTAS V110-2.0 LOCATIONS
SNYDER & ASSOCIATES, INC.
 1751 MADISON AVENUE
 COUNCIL BLUFFS, IA 51503
 712-322-3002 | www.snyder-associates.com

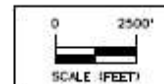


Project No: 1160931
Sheet 1 of 1



LEGEND

- PROPOSED SIEMENS 4.8-145 TURBINE LOCATIONS (TALLEST POTENTIAL WIND TURBINE)
- PROPERTY LINES
- PARTICIPATING PROPERTY LINE 275' SETBACK
- NON-PARTICIPATING PROPERTY LINE 65' SETBACK
- BEAM PATH WITH SETBACK
- 65' SETBACK FROM PUBLIC ROAD RIGHT OF WAY
- PARTICIPATING 1250' RESIDENCE SETBACK
- NON-PARTICIPATING 1500' RESIDENCE SETBACK
- 5280' SETBACK FROM CITY CORPORATE LIMITS
- 5280' SETBACK FROM CONSERVATION AREAS & PARKS
- PARCELS WITH SIGNED AGREEMENTS

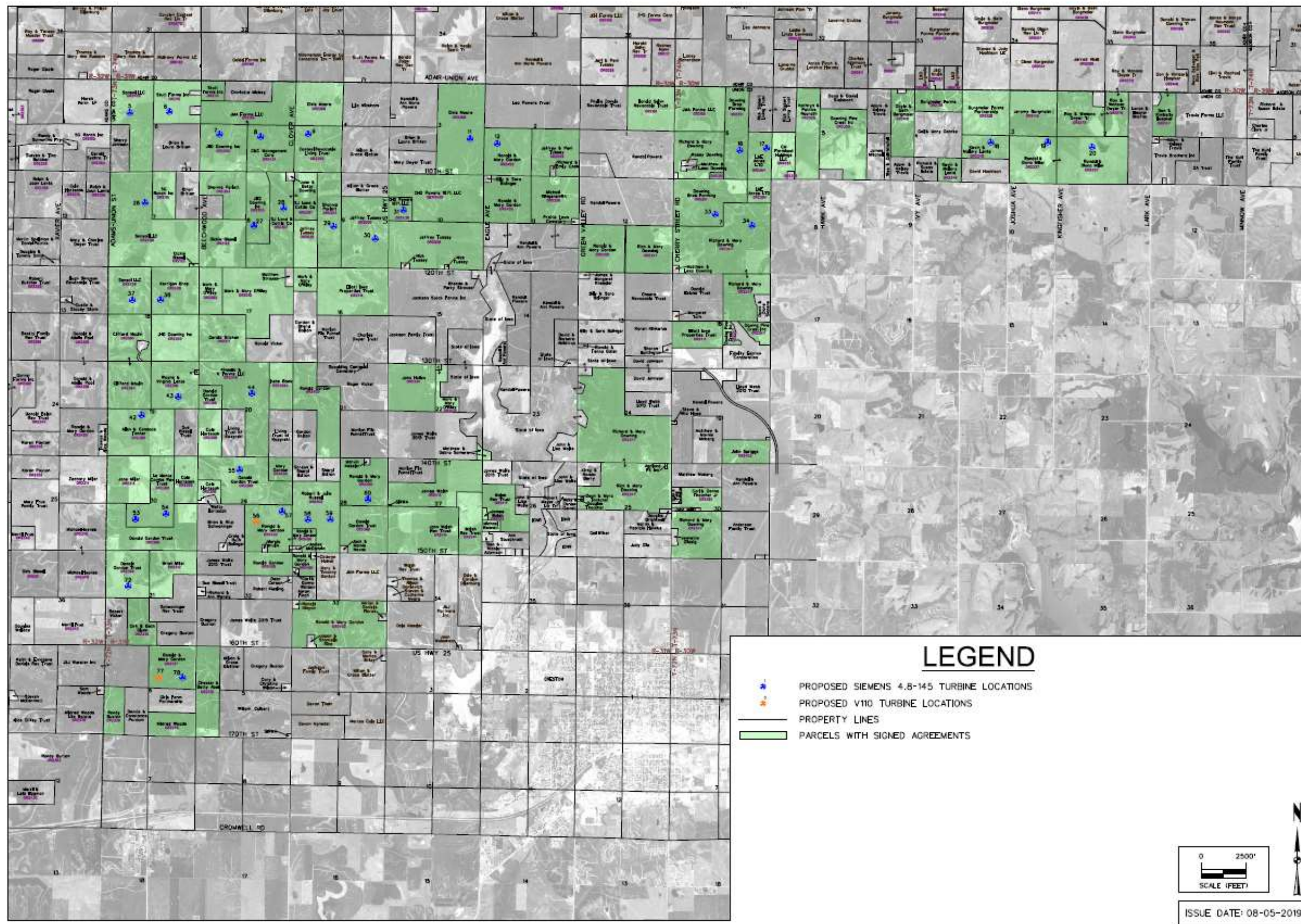


ISSUE DATE: 08-05-2019

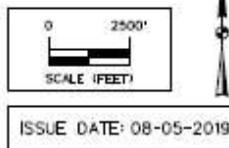
DATE	BY
05/31/19	MCC
05/31/19	1844
1160931	1160931
1160931	1160931

MIDAMERICAN ENERGY - SOUTHERN HILLS
 UNION COUNTY, IOWA
TURBINE SITE PLAN SIEMENS 4.8-145 LOCATIONS
 1751 MADISON AVENUE
 COUNCIL BLUFFS, IA 51503
SNYDER & ASSOCIATES, INC.
 712-322-3202 | www.snyder-assoc.com





- LEGEND**
- PROPOSED SIEMENS 4.8-145 TURBINE LOCATIONS
 - PROPOSED V110 TURBINE LOCATIONS
 - PROPERTY LINES
 - PARCELS WITH SIGNED AGREEMENTS



NO. 1	DATE	BY
NO. 2		
NO. 3		
NO. 4		
NO. 5		
NO. 6		
NO. 7		
NO. 8		
NO. 9		
NO. 10		
NO. 11		
NO. 12		
NO. 13		
NO. 14		
NO. 15		
NO. 16		
NO. 17		
NO. 18		
NO. 19		
NO. 20		
NO. 21		
NO. 22		
NO. 23		
NO. 24		
NO. 25		
NO. 26		
NO. 27		
NO. 28		
NO. 29		
NO. 30		
NO. 31		
NO. 32		
NO. 33		
NO. 34		
NO. 35		
NO. 36		
NO. 37		
NO. 38		
NO. 39		
NO. 40		
NO. 41		
NO. 42		
NO. 43		
NO. 44		
NO. 45		
NO. 46		
NO. 47		
NO. 48		
NO. 49		
NO. 50		

MIDAMERICAN ENERGY - SOUTHERN HILLS
TURBINE SITE PLAN - ALL TURBINE LOCATIONS
 UNION COUNTY, IOWA

SNYDER & ASSOCIATES, INC.
 1751 MADISON AVENUE
 COUNCIL BLUFFS, IA 51503
 712-322-3202 | www.snyder-assocs.com

